

CEILING HEIGHT AMENDED AS SUGGESTED
By M.M.D.A.,

Deputy Planner
23/12/18
Deputy Planner
11/10/18

TAMIL NADU
SLUM CLEARANCE BOARD

TYPE DESIGN NO. 8/93

- Twenty four in one block
- Four storeyed -

Scale: 1" = 4'-0" (1:50)

REFERENCE:

D	R.C framed with gsheet door	3'-0" X 6'-6" (91X 200)
D1	Ferrocement door (without frame)	2'-0" X 6'-0" (61X 183)
W	Steel window	4'-0" X 4'-0" (122X 122)
W1	- DO -	2'-0" X 3'-0" (61 X 91)
J	R.C Jali ventilator	2'-0" X 2'-0" (61 X 61)

Area details
Plinth area tenement 236 sqft
(or) 21.9m²

FLOOR AREA (Multipurpose room)
Four storeyed unit

GROUND FLOOR
① ② & ⑤ ⑥ = 12.3m²
③ & ④ = 12.2m²

FF & Typical floor
① ② & ⑤ ⑥ = 13.4m²
③ & ④ = 13.0m²

GROUND FLOOR
Area of staircase = 6.8m²
" passage = 5.9m²
12.7m²

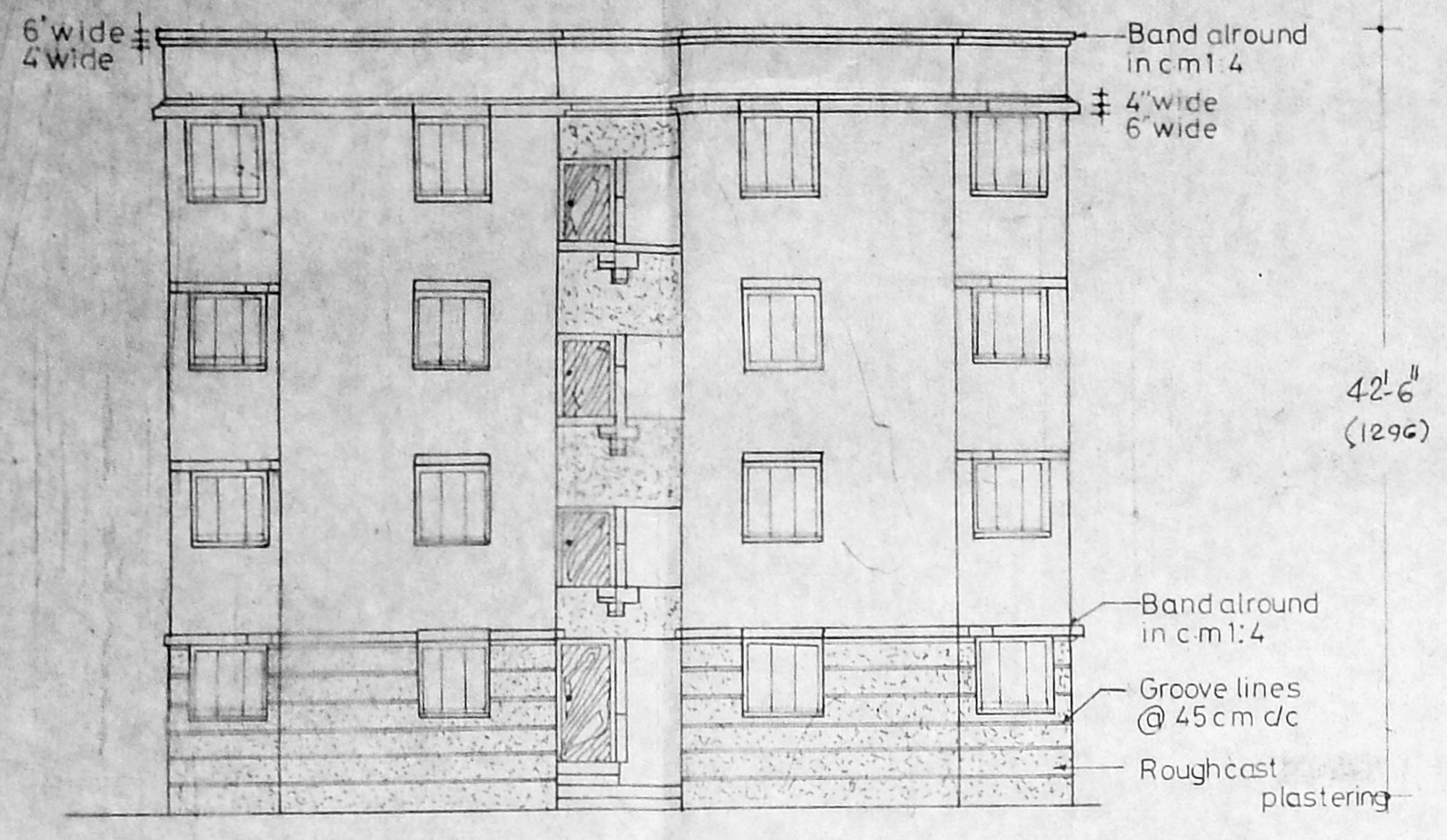
FF & TYPICAL FLOOR
Area of staircase = 8m²
" passage = 7.2m²
14.0m²

Plinth area per tenement = 19.8m²
(excluding staircase & passage)
Plinth area per tenement ff = 19.6m²
& typical
(excluding staircase & passage)

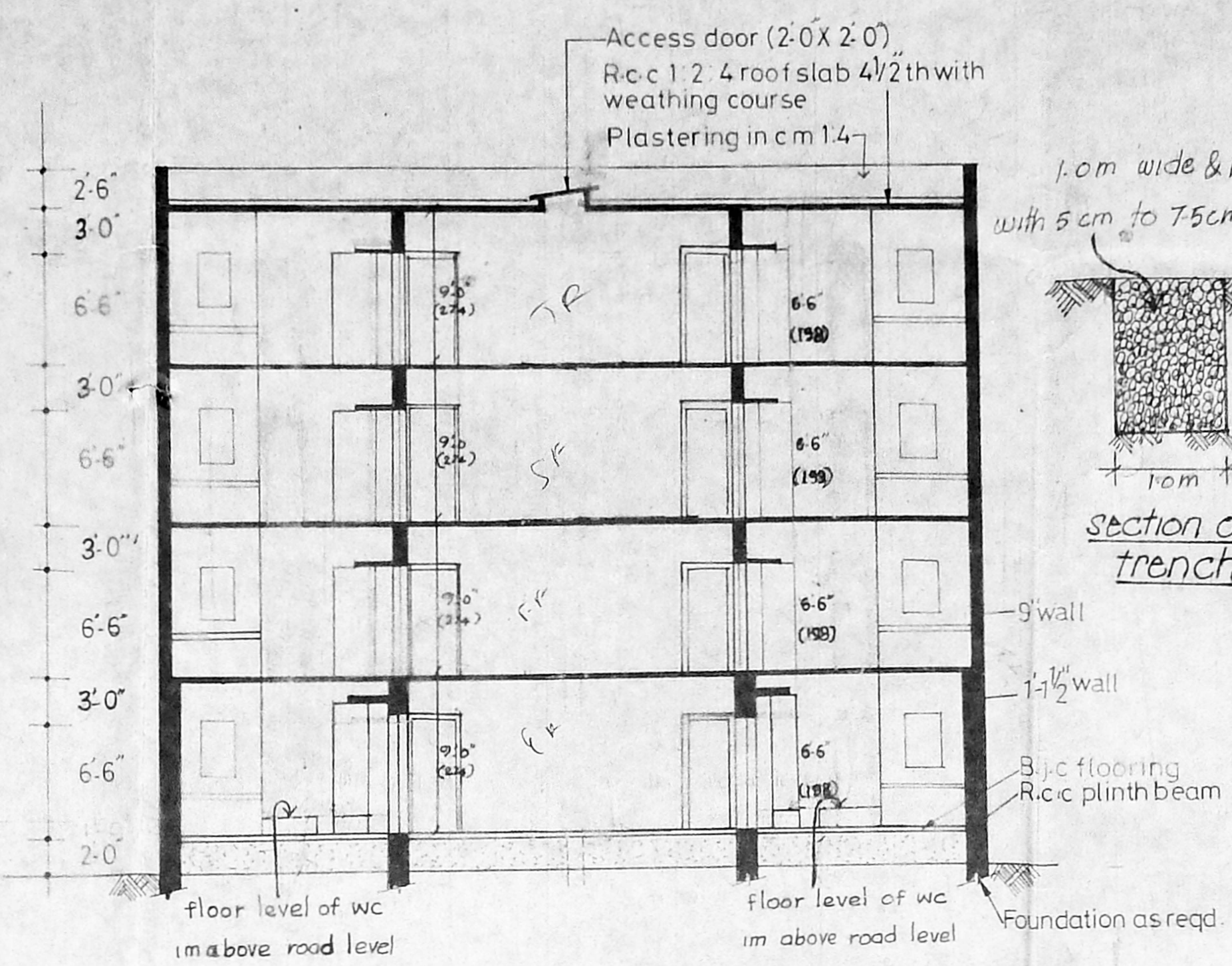
amended as suggested by HUDCO
Deputy Planner
DEPUTY PLANNER

M.M.D.A. B/PPN
(CNO. 2) 28728/93
Prepared by Asst. Planner
DEPUTY PLANNER

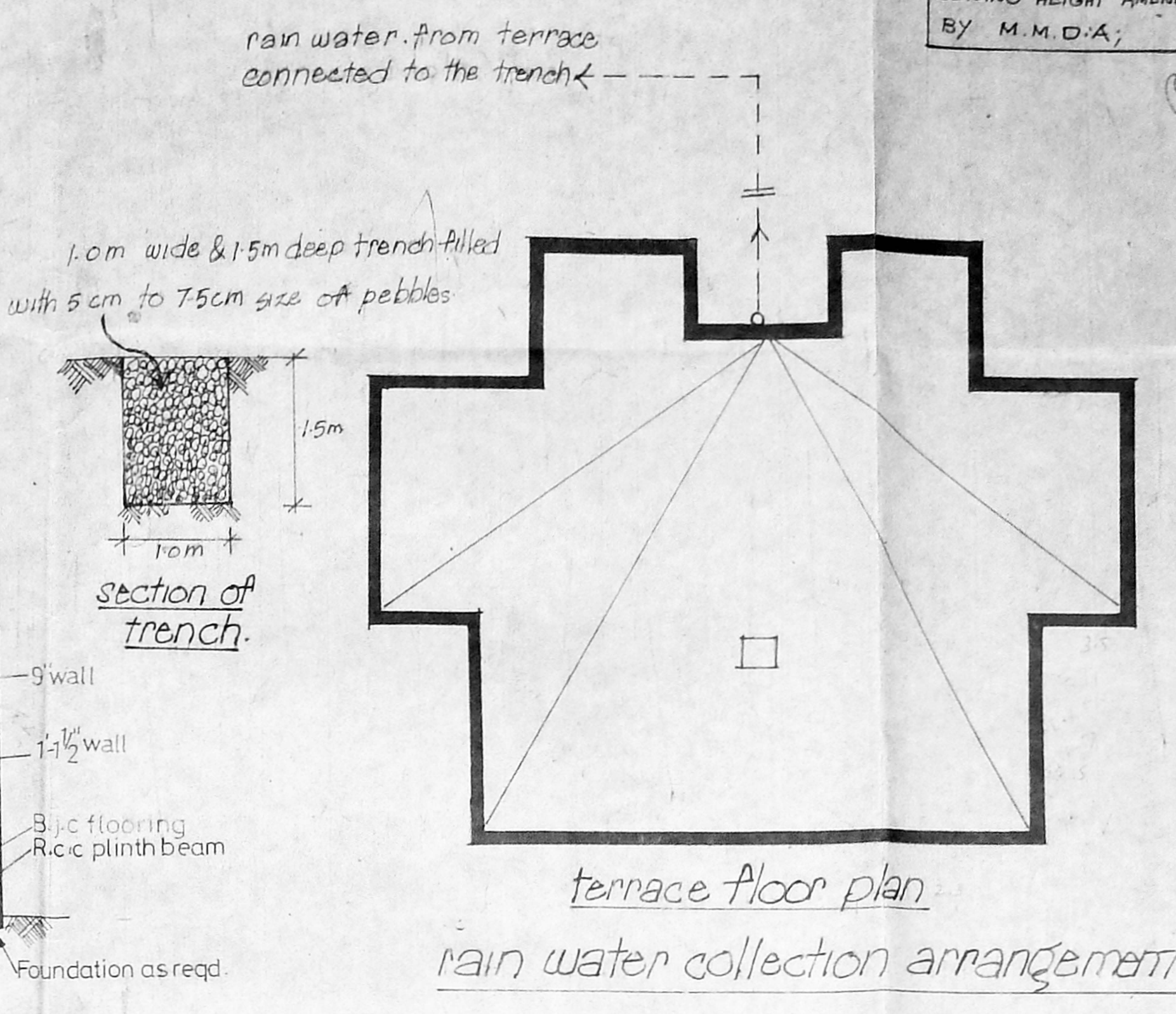
SJPTDG ENGINEER CHIEF ENGINEER



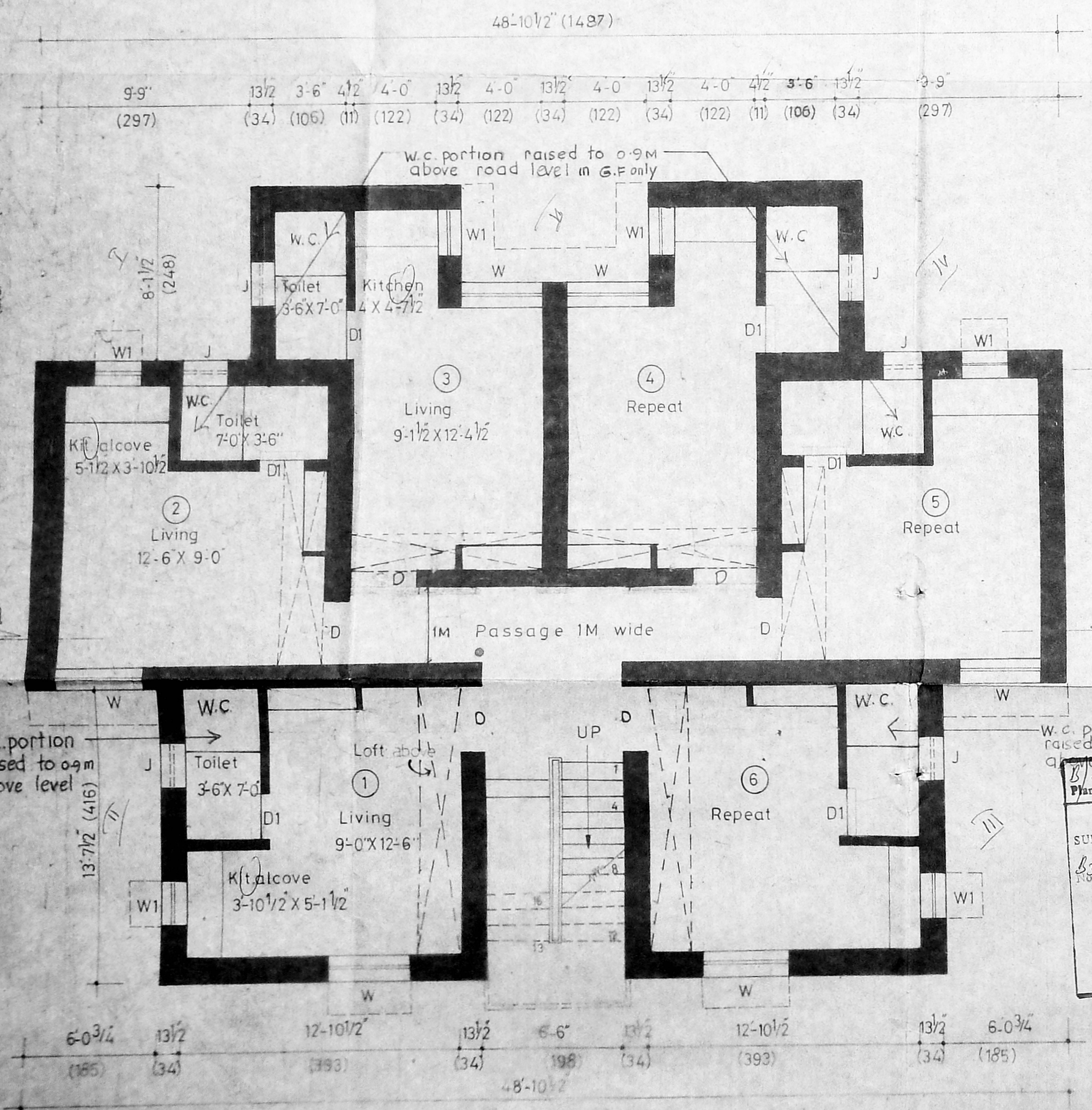
Front elevation (4 storeyed)



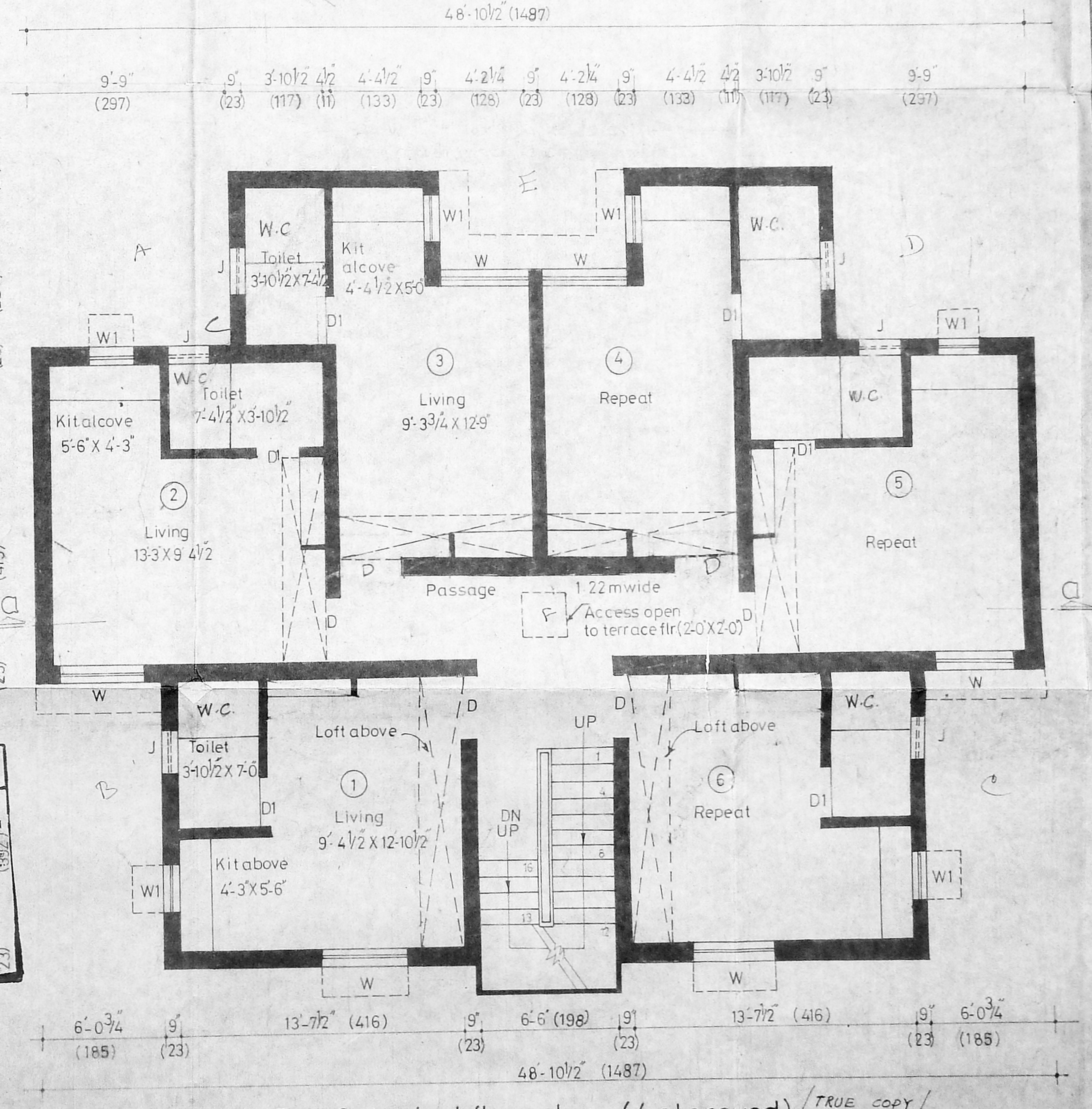
Section on a (4 storeyed)



rain water collection arrangement



Ground floor plan (4 storeyed)



First & typical floor plan (4 storeyed)

scale: 1" = 4'-0" (1:50)

APPROVED
SUBJECT TO THE CONDITIONS IN
THIS OFFICE ORDER
FOR MEMBER SECRETARY
CHENNAI METROPOLITAN
DEVELOPMENT AUTHORITY
CHENNAI-600 008

TRUE COPY /
Asst. Planner
7/11/18
traced by